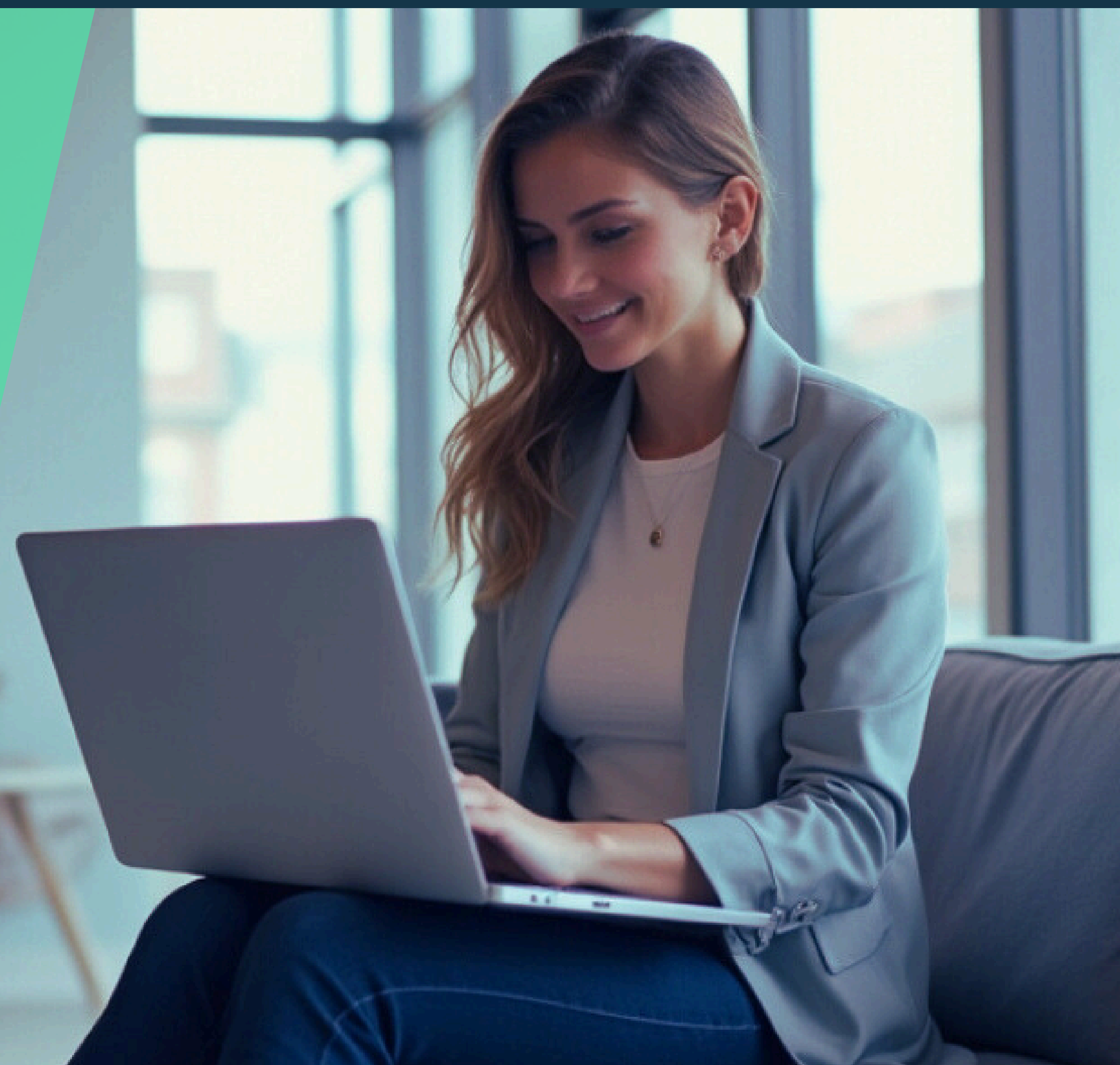




Lumara

Communications Security







What is Communications Security?

Every Australian organisation relies on email, chat, video, voice and file sharing. These tools connect staff, clients, and partners, yet they are also the most common target for cyber attacks.

At Secure ISS we protect these essential channels so information flows only where it should. Powered by Harmony Email and Collaboration, our service stops threats before they reach an inbox. Integrating directly with Microsoft 365, we deliver security that is both strong and seamless.

Why It Matters?

-  **Stronger Protection Against Phishing**
Prevent phishing, spoofing and impersonation before they land in inboxes.
-  **Protecting Sensitive Data**
Encryption and data loss prevention keep client records, finances and IP safe.
-  **Working Without Disruption**
Mail arrives quickly and security runs quietly in the background.
-  **Protecting Your Reputation**
Prevention protects the trust clients and partners place in your organisation.

24/7 Always On Prevention

- 01 Phishing and Impersonation
- 02 Malicious Links and Ransomware
- 03 Compromised Accounts & Risky Sign-Ins
- 04 Data Leakage Through Email & Shared Files
- 05 Email Authentication (DMARC, SPF, DKIM)



How we protect Microsoft 365

- Integrating directly with Microsoft 365
- Analysing every message with AI
- Rewriting & scanning links at click time
- Automated account locking & protection
- Alerting in real time with clear next steps

Protecting Australians since 2006

Australia is secure when Australian talent defends it.

Secure ISS is a sovereign cybersecurity and technology services provider, trusted by education providers, healthcare providers, governments, and industry leaders across Australia. Since 2006, we've delivered expert-led solutions to protect our nation's most critical sectors—built and run by Australians, for Australians.



Sovereign 24 / 7 SOC run in Australia, by Australians



Growing Aussie cyber talent with Aussie cyber partners



AI-accelerated defence, guided by Australian expertise and ethics



Get in Touch

www.secure-iss.com

care@secure-iss.com.au

07 5528 2373

